

A photograph of a modern building with a curved facade. The building features large glass windows that reflect the sky and clouds. The facade is composed of dark brown panels and light beige panels. The building is situated on a green lawn with some landscaping, including rocks and small shrubs. A paved walkway and a bench are visible in the foreground. The sky is blue with some clouds.

# SageGlass vs. View

## Exterior Aesthetic Comparison

# Components of Exterior Aesthetics

## 3 Key Assessment Criteria

1. Clear state neutrality
2. Tinted state reflectivity
3. Uniformity (pane to pane)

# 1. Clear State Comparison

## Previous Project Mock Up



SageGlass has a neutral color appearance in the clear state whereas View's glass has a more yellow/amber appearance

## 2. Tinted State Comparison

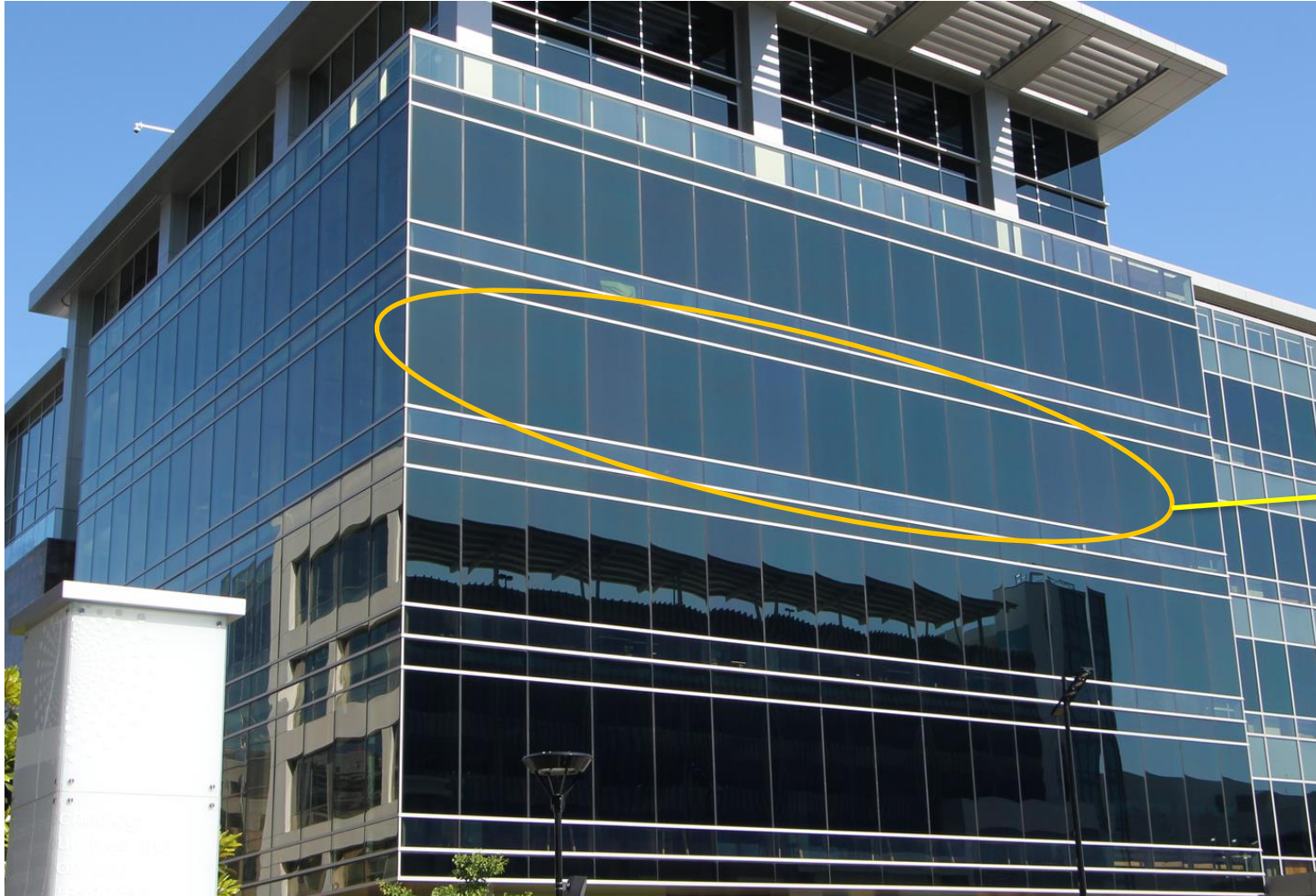
### Previous Project Mock Up



- SageGlass has a vibrant exterior aesthetic which has a mild reflective appearance
- View has a darker, yellow/amber appearance in the tinted state
- SageGlass' proprietary coating and glass make up creates a uniform aesthetic in all 3 tint states
- View applies their coating on a tempered piece of glass which highlights roller wave and creates a very non-uniform oil-canning effect

### 3. Uniformity

#### Multi-colored appearance for View



Here the non-uniformity manifests with a multi-colored appearance across multiple panes all next to each other on the same façade

View: San Antonio Center

Photo taken by customer evaluating SageGlass and View

### 3. Uniformity

Multi-colored appearance for View



Non-uniform

View: San Antonio Center

Photo taken by customer evaluating SageGlass and View

### 3. Uniformity

#### Multi-colored appearance for View



**Non-uniform**

View: San Antonio Center

Photo taken by customer evaluating SageGlass and View

### 3. Uniformity



SageGlass: University of Minnesota Athletes Village

### 3. Uniformity



SageGlass: The Yard at Shakespeare Theater

### 3. Uniformity



SageGlass: Farris Engineering Center

SageGlass®

Key Takeaway: SageGlass installations demonstrate superiority to View on all exterior aesthetic criteria

Saint-Gobain NA Headquarters  
(SageGlass)  
Malvern, PA

